

BEST ROOF HATCHES

THERMALLY BROKEN EQUIPMENT ACCESS ROOF HATCH - BILCO

CATEGORY: EQUIPMENT

SKU: F-50TB

Bilco®



TOLL FREE PHONE:
1-800-431-8651

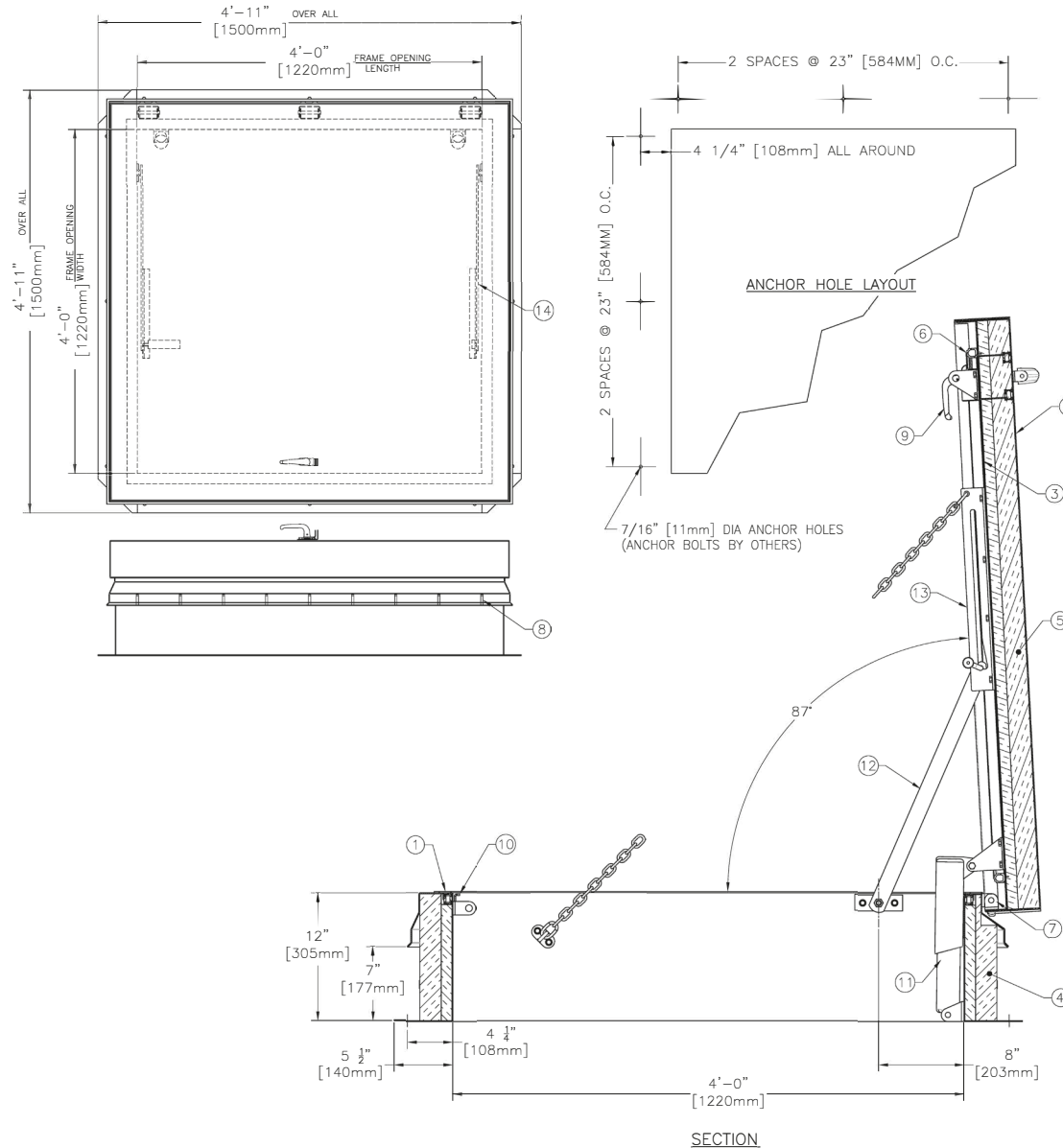


EMAIL:
info@bestroofhatches.com



FAX:
1-888-828-6021

www.BestRoofHatches.com



SPECIFICATIONS

1. THERMALLY BROKEN CURB W/INTEGRAL CAPFLASHING 11 GA. ALUMINUM (CORNERS FULLY WELDED)
2. THERMALLY BROKEN COVER - 11 GA. ALUMINUM
3. COVER LINER - 18 GA. ALUMINUM
4. 3" [75mm] POLYISOCYANURATE CURB INSULATION
5. 3" [75mm] POLYISOCYANURATE COVER INSULATION
6. EPDM GASKET (ALL AROUND COVER)
7. PINTLE HINGE - STAINLESS STEEL TYPE 316
8. Bilclip® FLASHING SYSTEM
9. SLAM LATCH WITH INSIDE AND OUTSIDE HANDLES W/ PADLOCK HASPS
10. LOCK STRIKE AND PADLOCK HASP
11. LIFTING MECHANISM WITH REINFORCED COMPOSITE TUBES AND COMPRESSION SPRINGS
12. HEAVY DUTY HOLD OPEN ARM W/ RED VINYL GRIP AND COVER RELEASE
13. ARM GUIDE BRACKET
14. GUIDE ARM
15. COVER HOLD CHAIN, (1) @ EACH END

SHOP FINISH

ALUMINUM: MILL FINISH
HARDWARE: CORROSION RESISTANT (UNLESS OTHERWISE SPECIFIED)

NOTES:

1. THIS PRODUCT MAY BE INSTALLED ON EITHER A FLAT OR SLOPING ROOF. WHEN INSTALLED ON A SLOPE, THE HINGE SIDE MUST RUN PARALLEL WITH THE SLOPE. IF SLOPE EXCEEDS 30°, ADVISE FACTORY FOR MODIFICATION.
2. FULL SPECIFICATIONS ARE AVAILABLE ON WEBSITE: www.bilco.com

CUSTOMER

P.O. NO.

JOB

SALES REP.

Bilco® Manufacturers of Doors for Special Services
THE BILCO COMPANY
New Haven, Connecticut 06505

SINGLE LEAF ROOF ACCESS HATCH TYPE F-50TB

QTY	TYPE	SIZE WIDTH x LENGTH
<input type="checkbox"/>	F-50TB	4'-0" x 4'-0" 1220mm x 1220mm HINGE SIDE

WEB SITE: www.bilco.com