

BEST ROOF HATCHES

**ALUMINUM COVER WITH
GALVANIZED STEEL EQUIPMENT
ACCESS ROOF HATCH - BILCO**

CATEGORY: EQUIPMENT

SKU: F-40

Bilco®



TOLL FREE PHONE:
1-800-431-8651

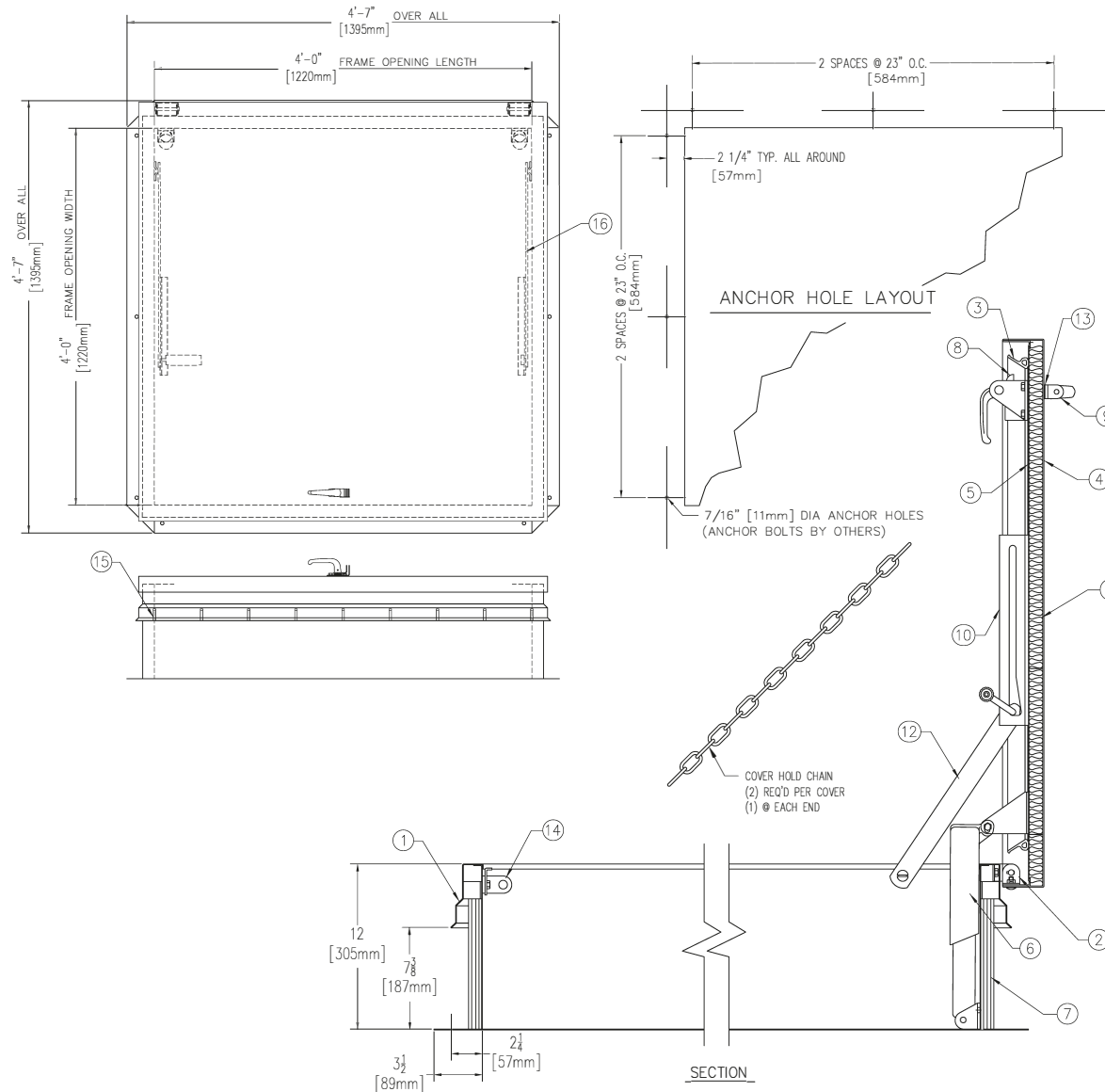


EMAIL:
info@bestroofhatches.com



FAX:
1-888-828-6021

www.BestRoofHatches.com



SPECIFICATIONS

- FRAME W/ CAPFLASHING (CORNERS FULL WELDED)
F-40 - 14 GAUGE P.B. GALV. STEEL
F-50 - 11 GAUGE ALUMINUM
- PINTLE HINGE
- GASKET (ALL AROUND COVER)
- COVER GAUGE
F-40 - 11 GAUGE ALUMINUM
F-50 - 11 GAUGE ALUMINUM
- COVER LINER
F-40 - 18 GAUGE ALUMINUM
F-50 - 18 GAUGE ALUMINUM
- LIFTING MECHANISM WITH REINFORCED COMPOSITE TUBES AND COMPRESSION SPRINGS
- 1" RIGID FIBERBOARD INSULATION
- SLAM LATCH
- INSIDE AND OUTSIDE HANDLES W/PADLOCK HASPS
- ARM GUIDE BRACKET
- 1" THICK FIBERGLASS COVER INSULATION
- HEAVY DUTY HOLD OPEN ARM W/ RED VINYL GRIP
- NEOPRENE GASKET
- LOCK STRIKE & PADLOCK HASP
- BILCLIP® FLASHING SYSTEM
- GUIDE ARM

SHOP FINISH:

STEEL: RED OXIDE PRIMER
ALUMINUM: MILL FINISH
HARDWARE: ZINC PLATED & CHROMATE SEALED
(UNLESS OTHERWISE SPECIFIED)

THIS PRODUCT MAY BE INSTALLED ON EITHER A FLAT OR SLOPING ROOF. WHEN INSTALLED ON A SLOPE, THE HINGE SIDE MUST RUN PARALLEL WITH THE SLOPE. IF SLOPE EXCEEDS 30°, ADVISE FACTORY FOR MODIFICATION.

CUSTOMER:

P.O. N°:

JOB:

SALES REP:

Manufacturers of Doors for Special Services
Bilco® THE BILCO COMPANY
New Haven, Connecticut 06505

SINGLE LEAF ROOF SCUTTLE TYPE F SIZE 4'-0" x 4'-0" WIDTH x LENGTH

QTY	TYPE	METAL
<input type="checkbox"/>	F-40	ALUM. COVER/STEEL FRAME
<input type="checkbox"/>	F-50	ALUM. COVER/ALUM. FRAME