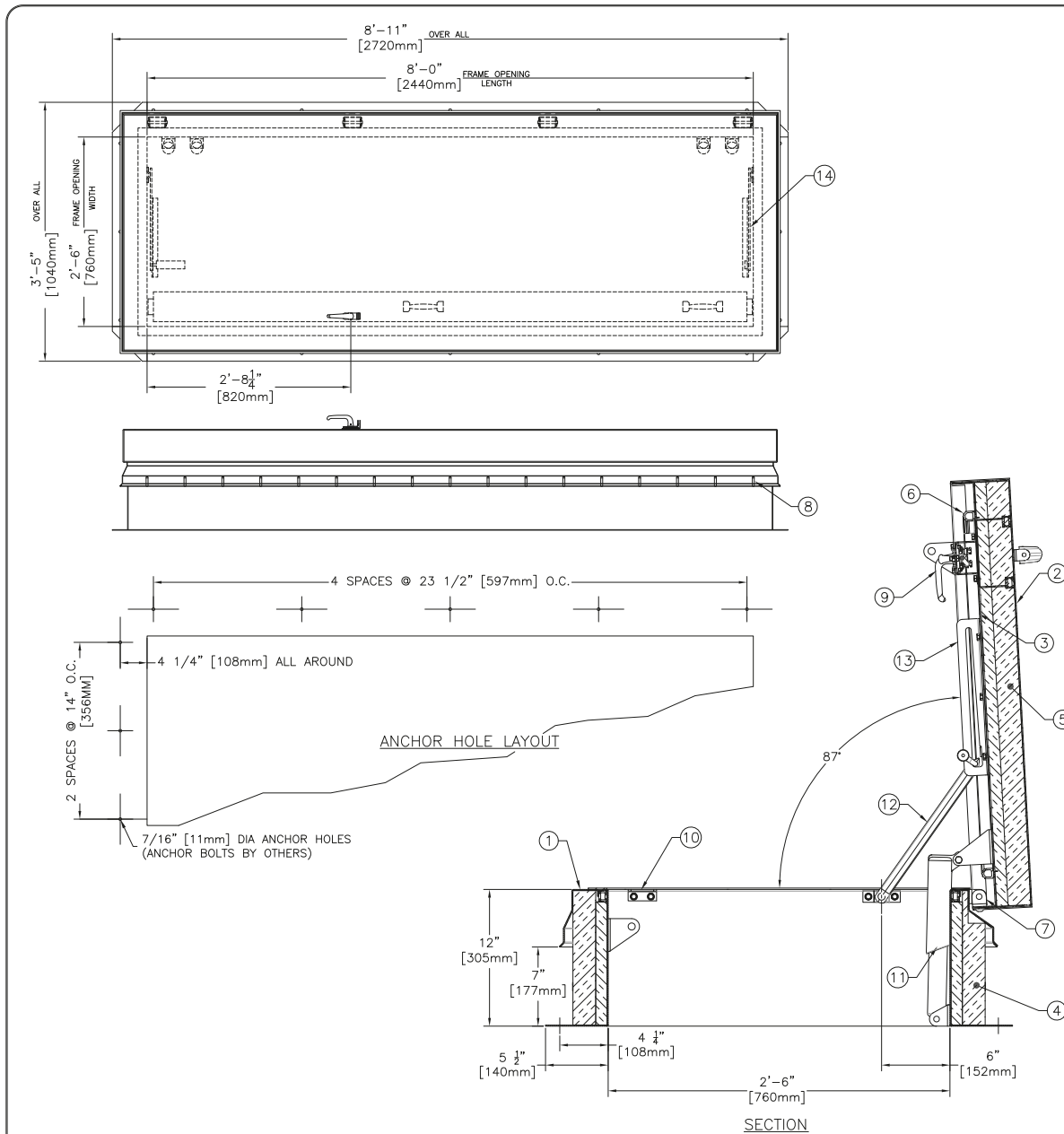


## THERMALLY BROKEN SERVICE STAIR ACCESS ROOF HATCH - BILCO

CATEGORY: SERVICE STAIR

SKU: L-50TB



### SPECIFICATIONS

1. THERMALLY BROKEN CURB W/INTEGRAL CAPFLASHING 11 GA. ALUMINUM (CORNERS FULLY WELDED)
2. THERMALLY BROKEN COVER - 11 GA. ALUMINIUM
3. COVER LINER - 18 GA. ALUMINIUM
4. 3" [75mm] POLYISOCYANURATE CURB INSULATION
5. 3" [75mm] POLYISOCYANURATE COVER INSULATION
6. EPDM GASKET (ALL AROUND COVER)
7. PINTLE HINGE - STAINLESS STEEL TYPE 316
8. Bilco® FLASHING SYSTEM
9. SLAM LATCH (2 POINT) WITH INSIDE AND OUTSIDE HANDLES W/ PADLOCK HASPS
10. LOCK STRIKE AND PADLOCK HASP
11. LIFTING MECHANISM WITH REINFORCED COMPOSITE TUBES AND COMPRESSION SPRINGS
12. AUTOMATIC HOLD OPEN ARM W/ RED VINYL GRIP AND COVER RELEASE
13. ARM GUIDE BRACKET
14. GUIDE ARM

### SHOP FINISH

ALUMINIUM: MILL FINISH  
HARDWARE: CORROSION RESISTANT (UNLESS OTHERWISE SPECIFIED)

### NOTES:

1. THIS PRODUCT MAY BE INSTALLED ON EITHER A FLAT OR SLOPING ROOF. WHEN INSTALLED ON A SLOPE, THE HINGE SIDE MUST RUN PARALLEL WITH THE SLOPE. IF SLOPE EXCEEDS 30°, ADVISE FACTORY FOR MODIFICATION.
2. FULL SPECIFICATIONS ARE AVAILABLE ON WEBSITE: [www.bilco.com](http://www.bilco.com)

### CUSTOMER

P.O. NO.

JOB

SALES REP.

**Bilco®** Manufacturers of Doors for Special Services  
THE BILCO COMPANY  
New Haven, Connecticut 06505

### SINGLE LEAF ROOF ACCESS HATCH TYPE L-50TB

| QTY                      | TYPE   | SIZE<br>WIDTH x LENGTH                        |
|--------------------------|--------|---|
| <input type="checkbox"/> | L-50TB | 2'-6" x 8'-0"<br>760mm x 2440mm<br>HINGE SIDE |

WEB SITE: [www.bilco.com](http://www.bilco.com)

**TOLL FREE PHONE:**  
1-800-431-8651

**EMAIL:**  
[info@bestroofhatches.com](mailto:info@bestroofhatches.com)

**FAX:**  
1-888-828-6021

[www.BestRoofHatches.com](http://www.BestRoofHatches.com)