

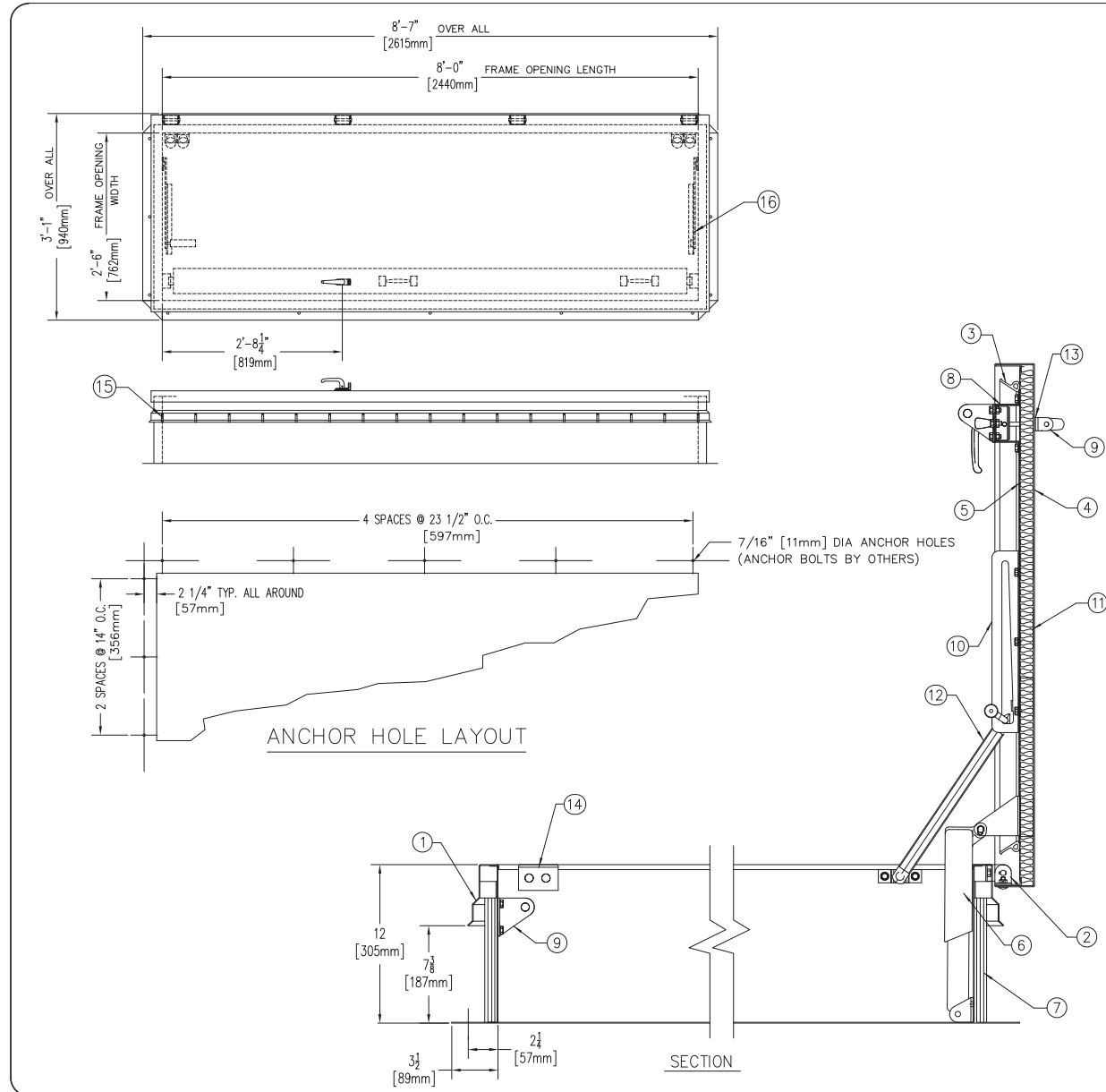
BEST ROOF HATCHES

GALVANIZED STEEL SERVICE STAIR ACCESS ROOF HATCH - BILCO

CATEGORY: SERVICE STAIR

SKU: L-20

Bilco®



SPECIFICATIONS

1. FRAME W/ CAPFLASHING (CORNERS FULL WELDED)
 - L-20 - 14 GAUGE P.B. GALV. STEEL
 - L-40 - 14 GAUGE P.B. GALV. STEEL
 - L-50 - 11 GAUGE ALUMINUM
2. PINTLE HINGE
3. GASKET (ALL AROUND COVER)
4. COVER GAUGE
 - L-20 - 14 GAUGE P.B. GALV. STEEL
 - L-40 - 11 GAUGE ALUMINUM
 - L-50 - 11 GAUGE ALUMINUM
5. COVER LINER
 - L-20 - 22 GAUGE P.B. GALV. STEEL
 - L-40 - 18 GAUGE ALUMINUM
 - L-50 - 18 GAUGE ALUMINUM
6. LIFTING MECHANISM WITH REINFORCED COMPOSITE TUBES AND COMPRESSION SPRINGS
7. 1" RIGID FIBERBOARD INSULATION
8. SLAM LATCH (2 POINT)
9. INSIDE AND OUTSIDE HANDLES W/ PADLOCK HASPS
10. ARM GUIDE BRACKET
11. 1" THICK FIBERGLASS COVER INSULATION
12. HOLD OPEN ARM W/ RED VINYL GRIP
13. NEOPRENE GASKET
14. LOCK STRIKE
15. BILCLIP® FLASHING SYSTEM
16. GUIDE ARM

SHOP FINISH:
 STEEL: RED OXIDE PRIMER
 ALUMINUM: MILL FINISH
 HARDWARE: ZINC PLATED & CHROMATE SEALED (UNLESS OTHERWISE SPECIFIED)

THIS PRODUCT MAY BE INSTALLED ON EITHER A FLAT OR SLOPING ROOF. WHEN INSTALLED ON A SLOPE, THE HINGE SIDE MUST RUN PARALLEL WITH THE SLOPE. IF SLOPE EXCEEDS 30°, ADVISE FACTORY FOR MODIFICATION.

CUSTOMER:

P.O. #:

JOB:

SALES REP:

Manufacturers of Doors for Special Services
Bilco® THE BILCO COMPANY
 New Haven, Connecticut 06505

SINGLE LEAF ROOF SCUTTLE
TYPE L SIZE 2'-6" x 8'-0"
 WIDTH x LENGTH

QTY	TYPE	METAL
<input type="checkbox"/>	L-20	STEEL COVER/STEEL FRAME
<input type="checkbox"/>	L-40	ALUM. COVER/STEEL FRAME
<input type="checkbox"/>	L-50	ALUM. COVER/ALUM. FRAME

TOLL FREE PHONE:
 1-800-431-8651

EMAIL:
 info@bestroofhatches.com

FAX:
 1-888-828-6021

www.BestRoofHatches.com