

BEST ROOF HATCHES

**GALVANIZED STEEL SHIP STAIR
ACCESS ROOF HATCH - BILCO**

CATEGORY: SHIP STAIR

SKU: NB-20

Bilco®



TOLL FREE PHONE:
1-800-431-8651

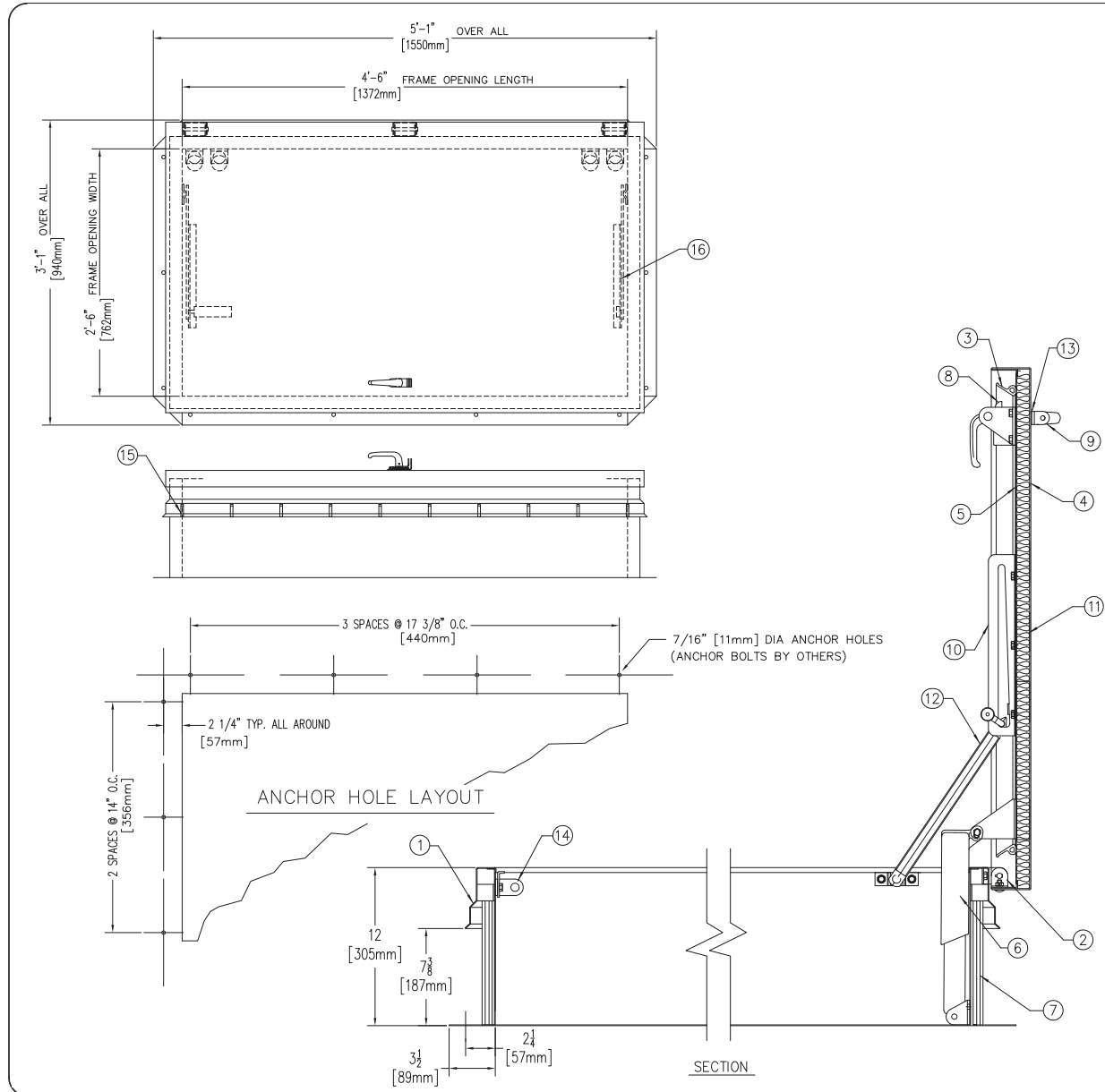


EMAIL:
info@bestroofhatches.com



FAX:
1-888-828-6021

www.BestRoofHatches.com



SPECIFICATIONS

1. FRAME W/ CAPFLASHING (CORNERS FULL WELDED)
 - NB-20 - 14 GAUGE P.B. GALV. STEEL
 - NB-40 - 14 GAUGE P.B. GALV. STEEL
 - NB-50 - 11 GAUGE ALUMINUM
2. PINTLE HINGE
3. GASKET (ALL AROUND COVER)
4. COVER GAUGE
 - NB-20 - 14 GAUGE P.B. GALV. STEEL
 - NB-40 - 11 GAUGE ALUMINUM
 - NB-50 - 11 GAUGE ALUMINUM
5. COVER LINER
 - NB-20 - 22 GAUGE P.B. GALV. STEEL
 - NB-40 - 18 GAUGE ALUMINUM
 - NB-50 - 18 GAUGE ALUMINUM
6. LIFTING MECHANISM WITH REINFORCED COMPOSITE TUBES AND COMPRESSION SPRINGS
7. 1" RIGID FIBERBOARD INSULATION
8. SLAM LATCH
9. INSIDE AND OUTSIDE HANDLES W/ PADLOCK HASPS
10. ARM GUIDE BRACKET
11. 1" THICK FIBERGLASS COVER INSULATION
12. HOLD OPEN ARM W/ RED VINYL GRIP
13. NEOPRENE GASKET
14. LOCK STRIKE & PADLOCK HASP
15. BILCLIP® FLASHING SYSTEM
16. GUIDE ARM

SHOP FINISH:
 STEEL: RED OXIDE PRIMER
 ALUMINUM: MILL FINISH
 HARDWARE: ZINC PLATED & CHROMATE SEALED
 (UNLESS OTHERWISE SPECIFIED)

THIS PRODUCT MAY BE INSTALLED ON EITHER A FLAT OR SLOPING ROOF. WHEN INSTALLED ON A SLOPE, THE HINGE SIDE MUST RUN PARALLEL WITH THE SLOPE. IF SLOPE EXCEEDS 30°, ADVISE FACTORY FOR MODIFICATION.

CUSTOMER:

P.O. #:

JOB:

SALES REP:

Manufacturers of Doors for Special Services
Bilco® THE BILCO COMPANY
 New Haven, Connecticut 06505

SINGLE LEAF ROOF SCUTTLE
TYPE NB SIZE 2'-6" x 4'-6"
 WIDTH x LENGTH

QTY	TYPE	METAL
<input type="checkbox"/>	NB-20	STEEL COVER/STEEL FRAME
<input type="checkbox"/>	NB-40	ALUM. COVER/STEEL FRAME
<input type="checkbox"/>	NB-50	ALUM. COVER/ALUM. FRAME