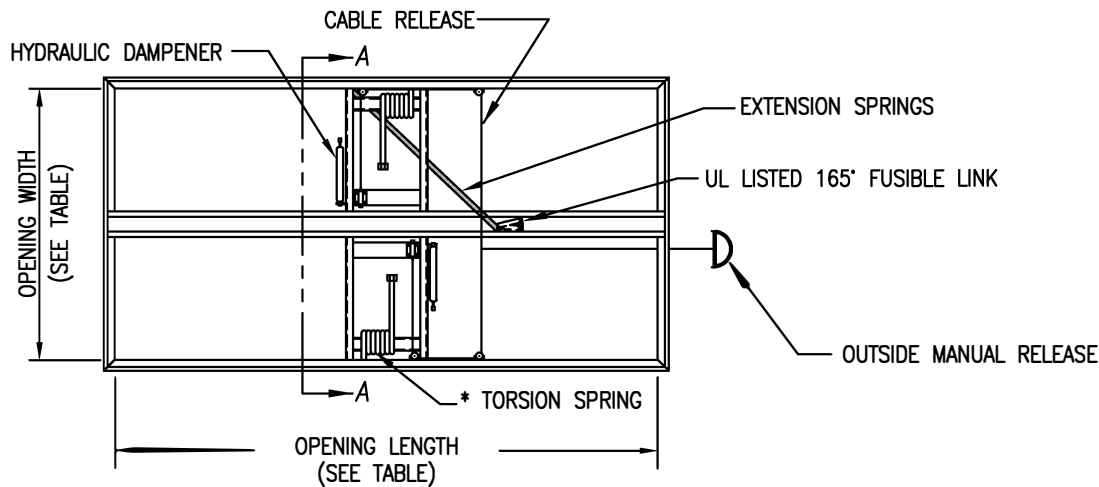


7/16" HOLES 1-1/4" FROM OUTSIDE  
EDGE ARE PROVIDED ALONG PERIMETER  
(24" MIN. O.C.) OF FLANGE FOR MOUNTING.



ORDER WILL NOT BE RELEASED FOR FABRICATION UNTIL SIGNED COPY IS RECEIVED.

VERIFICATION AND APPROVAL OF GENERAL ARRANGEMENT AND OVERALL DIMENSIONS OF THIS DOCUMENT ARE REQUIRED BEFORE THE ORDER IS ENTERED FOR MANUFACTURING.

APPROVAL SIGNATURE \_\_\_\_\_

TITLE HELD \_\_\_\_\_

DATE OF APPROVAL \_\_\_\_\_

U-LPAG "LOW PROFILE" HEAT & SMOKE VENT			
MATERIAL SCHEDULE			
QUANTITY	SIZE	COVER	FRAME
		.063 GA. ALUM.	16 GA. GALV. STL.

**MILCOR** BEST ROOF HATCHES For more information, contact us at [info@bestroofhatches.com](mailto:info@bestroofhatches.com) or call us at 1-800-431-8651

STANDARD MODEL TABLE					
MODEL NUMBER	INSIDE CURB DIM.		QTY.	UL	FM
	WIDTH	X LENGTH			
U-LPAG-4848	48"	X 48"		✓	✓
U-LPAG-4860	48"	X 60"		✓	✓
U-LPAG-4872	48"	X 72"		✓	✓
U-LPAG-4884	48"	X 84"		✓	✓
U-LPAG-4890	48"	X 90"		✓	✓
U-LPAG-4896	48"	X 96"		✓	✓
U-LPAG-6060	60"	X 60"		✓	✓

**NOTES:**

- \* LISTED BY UNDERWRITERS' LABORATORIES (UL793)
- \* APPROVED BY FACTORY MUTUAL (SNOW RATE 10 PSF)
- \* APPROVED BY FACTORY MUTUAL (UP-LIFT PRESSURE 225 PSF)



For more information, contact us at [info@bestroofhatches.com](mailto:info@bestroofhatches.com) or call us at 1-800-431-8651

ALUMINUM & GALVANIZED CONSTRUCTION	
DEALER	
PROJECT	
LOCATION	
ARCH.	
DATE	DRAWN
	JOB NO.
REV:(A) UP LIFT PRESSURE WAS 30 PSF(03/17/10)	
SHEET	